

# SPEC SHEET + MEASUREMENTS

**SPORT-TEK**

## Sport-Tek® Waterproof Insulated Jacket. JST56

### Product photo



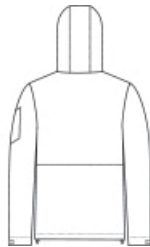
This fully seam-sealed, insulated jacket offers outstanding wind-resistant, water-repellent protection to help keep you dry in the stands or on the street.

- 100% polyester with waterproof face coating
- Fully seam-sealed
- Jersey-lined body and hood
- 2.4-ounce polyfill insulation in body
- 1.8-ounce polyfill insulation in hood and sleeves
- Polyester taffeta sleeves for easy on/off
- 5000MM fabric waterproof rating
- 3000G/M<sup>2</sup> fabric breathability rating
- Tag-free label
- Three-panel hood with drawcord and toggles
- Exposed molded zipper
- Left arm zippered pocket
- Adjustable self-fabric tab cuffs with hook and loop closures
- Front pouch pocket
- Decoration access pocket
- Adjustable locking drawcord at hem

### Sketches



front



back

### CARE INSTRUCTIONS

Machine Wash Cold With Like Colors Or Separate. Do Not Use Fabric Softener. Non-Chlorine Bleach When Needed. Tumble Dry Low. Do Not Iron.

# SPEC SHEET + MEASUREMENTS



Sport-Tek® Waterproof Insulated Jacket. JST56

## PRODUCT MEASUREMENTS

	XS	S	M	L	XL	2XL	3XL	4XL
Body Length at Back	27	28	29	30	31	32	32 1/2	33
Chest	20 1/2	22	23 1/2	25	26 1/2	28	30	32
Sleeve Length from Center Back	35 1/4	36	36 3/4	37 1/2	38 1/4	39	39 3/4	40 1/2

**Body Length at Back:** Measured from high point shoulder to finished hem at back.

**Chest:** Measured across the chest one inch below armhole when laid flat.

**Sleeve Length from Center Back:** Measure from Center Back neck to shoulder point to sleeve hem.

## SIZE CHARTS

	XS	S	M	L	XL	2XL	3XL	4XL
Chest	32-34	35-37	38-40	41-43	44-46	47-49	50-53	54-57

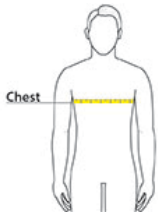
# SPEC SHEET + MEASUREMENTS



Sport-Tek® Waterproof Insulated Jacket. JST56

## HOW TO MEASURE

---



**CHEST**  
Measure under the arm and around the fullest part of the chest with arms down, keeping tape horizontal.

## COLORS

---



Black  
PMS BLACK  
C

DeepRed



Forest Green  
PMS 553C



Graphite  
PMS 432C

Maroon



True Navy  
PMS 533C



True Royal  
PMS 7687C